



All Lexicomm Emergency Voice Communications Systems (EVCS) are designed to comply fully with the requirements of BS5839-9:2011 for use as a disabled refuge system (DRS) with integrated Emergency Assist Alarm System. The ViLX-ACA kit provides a BS8300 compliant accessible toilet solution including the "Acknowledge" signalling required for remote locations.



Key Features:

- ◆ **Compact Design**
- ◆ **BS8300 "Acknowledge" Feature**
- ◆ **High volume sounder**
- ◆ **Blue "Halo"**
- ◆ **Flush or surface mounting**
- ◆ **Braille enhanced Cancel Button**
- ◆ **Stainless Steel as standard**

The ViLX-ACA provides a simple solution to integrating emergency assist alarm call systems within an EVCS, providing a single display point for all disabled calls within a building.

It can be used on a dedicated line, or may share a line with the ViLX-OSB disabled refuge outstation (as long as fire rated cable is used), where operation of the refuge point overrides the assistance call (ideal where a disabled toilet is adjacent to a refuge lobby).

When a call is made the over-door and cancel units emit a two tone siren with the "Halo" flashing, when the call is acknowledged from the EVCS controller the "Halo" on these units lights steadily and the tone double beeps every 15 seconds to reassure the caller help is on the way.

As the ViLX-ACA is connected to a Lexicomm master station the plates and cables are fully end of line monitored and battery backed as standard.

The ViLX-ACA plates are supplied with a brushed stainless finish and a Blue HALO to aid location.

Suitability

The ViLX-ACA is an emergency assist alarm system as defined in BS8300, and is designed to be used by the public as an emergency assistance alarm call point, and integrated into the EVCS as allowed by BS5839pt9:2011

The ViLX-ACA kit can be expanded using additional plates making it suitable for accessible bedrooms at the locations described in Building Regulations Approved Document M and BS8300.

Mounting The Unit

The ViLX-ACA components are not supplied with back-boxes as they can be used with any "MK" style single back-box over 25mm deep. To accept cable glands the back box needs to be 35mm deep) including metal clad surface types and plastic plasterboard liner boxes. The units should be mounted as shown below to comply with the requirements of Building Regulations Document M (Access for the Disabled) and BS8300-2:2018

When flush mounting use the back-box manufacturers recommended cut out.

Technical Specification

Physical

Height	86mm
Width	86mm
Depth	22mm
Weight	600 g
Material	Stainless Steel/ Acrylic
Finish	Brushed

Recommended Cables

Type	PVC or Fire Rated*
Cores	2 core 1mm CSA
Distance	500m

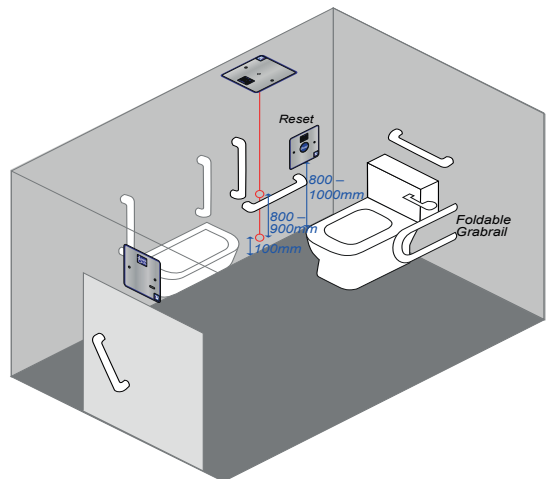
Standards Compliance

EMC	EN55103-1, EN55103-2
LVD	EN60950
Product Family	BS5839-pt9, BS8300

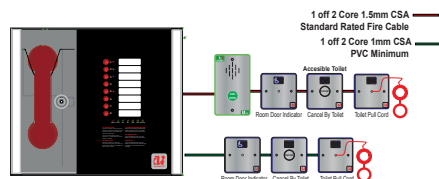
Part Numbers

Kit	Part ViLX-ACA
Over door	Part ViLX-ODP
Cancel	Part ViLX-CNP
Pullcord	Part ViLX-CPP
*If sharing a line with ViLX-OSB	

Mounting



Connections



All information is believed to be correct at time of printing E&OE. VOX Ignis operates a policy of continuous improvement; always confirm specification details before purchase.
Designed and manufactured in the North East of England by VOX Ignis Limited, registered in England 8892407.
North East Business & Innovation Centre, Enterprise Park East, Sunderland, SR5 2TH, UK.